



ELECTRUM AV

10.04.2015
DR2180P-B4-K

www.electrum-av.com

**TRANSISTOR IGBT AND MOSFET DRIVER DR2180P-B4-K
ANALOGUE OF 2SP0115**

USER'S MANUAL

CONTENTS

1 OVERVIEW.....	3
2 DRIVER COMPOSITION.....	3
3 FUNCTIONAL DRIVER FEATURES	3
4 BASIC AND MAXIMUM PERMISSIBLE CHARACTERISTICS	5
5 DRIVER OPERATION	7
6 DRIVER CONNECTION RECOMMENDATIONS.....	8
7 DRIVER ADJUSTMENT RECOMMENDATION.....	9
8 GRAPHS EXPLAINING DRIVER OPERATION.....	10
9 INFORMATION ABOUT PRECIOUS METALS	11
10 SERVICE RECOMMENDATIONS.....	11
11 RELIABILITY REQUIREMENTS	12

This document is a user's manual with a description of characteristics of this product for which are warranted. All the products in the production process pass a complete set of electrical tests, which are performed twice, once before encapsulation, and then again after it. Tests carried out by "Electrum AV" are exhaustive and include 100% control at the final testing.

Any such warranty is provided only in accordance with the terms of the supply agreement (supply contract or other documents in accordance with applicable law). The information presented in this document does not provide warranties and liability of "Electrum AV" by the use of such information and the suitability of products for your equipment. The data contained in this document are intended exclusively for technically trained staff. You and your technical expert will have to evaluate the suitability of the product for the application and the completeness of the product data, in connection with this application.

Any products of "Electrum AV" are not permitted for the use in devices and life support systems and special equipment without the prior written consent of "Electrum AV".

If you need information about the product, which is not shown in this user's manual or which concerns the specific application of our product, please contact the sales office to the manager who is responsible for your enterprise.

Engineers "Electrum AV" have a lot of experience in the design, manufacture and application of powerful force devices and smart drivers and has already implemented a large number of individual decisions. If you need power modules and drivers that are not included in the package, as well as products with differences from the standard devices in specifications or design, please contact to our managers and specialists who will offer you best solution for your application.

"Electrum AV" reserves the right to make changes without notice in this document to improve the reliability, functionality and design improvement.

1 OVERVIEW

A double-channel driver of powerful transistors with field drive (MOSFET or IGBT) (hereinafter – driver) is intended for dependant galvanic isolated controlling of two power transistors with maximum permissible voltage up to 1700 V. The driver is an amplifier – generator of transistor gates control signals with frequency up to 100 kHz. The driver contains built-in galvanic isolated DC/DC-converter, providing requisite levels of unlocking and locking voltages on transistor gate. The driver is an analogue of **2SP0115** in structure and function.

When delivering the driver has been adjusted for protection operation threshold against collector-emitter overvoltage equaled to 1100 V (jumper J1.1, J1.2). If it's necessary to set other parameters you should change the relevant jumpers.

2 DRIVER COMPOSITIONS

2.1 The driver is a printed-circuit board with mounted a driver module on it (DM), made in a hermetic plastic housing, necessary tuning element and connectors for connection of controlled transistors and control signals.

2.2 The driver contains the following functional assemblies:

- 1 Driver supply voltage stabilizer with protection against false turn-on polarity;
- 2 Built-in DC-DC converter with stabilization of unlocking and locking voltage levels on gates of controlled transistors;
- 3 Input logics;
- 4 Drive circuit of controlled transistor gates;
- 5 Protection circuit against undervoltage and overvoltage on controlled transistors gate;
- 6 Protection circuit of controlled transistors against current overload.

3 FUNCTIONAL DRIVER FEATURES

3.1 The driver provides the following driving functions, controlling and protecting functions of controlled transistor:

- 1 Collector saturation voltage control of controlled transistor, its protective disconnection when saturation state output;
- 2 Protective turn-off threshold regulation on saturation voltage;
- 3 Soft driver junction from active state to inactive one at an “emergency” (output of controlled transistor from saturation mode);
- 4 Control block at an “Emergency”;
- 5 Emergency alarm;
- 6 On/off time regulation of controlled transistor by means of changing of resistor resistance in output circuit (R_{on} , R_{off});
- 7 Block of simultaneous turn-on of upper and lower arm;
- 8 Switching delay of upper and lower arm;
- 9 Switching delay regulation of upper and lower arm;
- 10 Driver supply voltage control (built-in comparators) on DC/DC converter output.

3.2 Overall drawing is shown at Figure 1, functional driver scheme is represented at Figure 2.

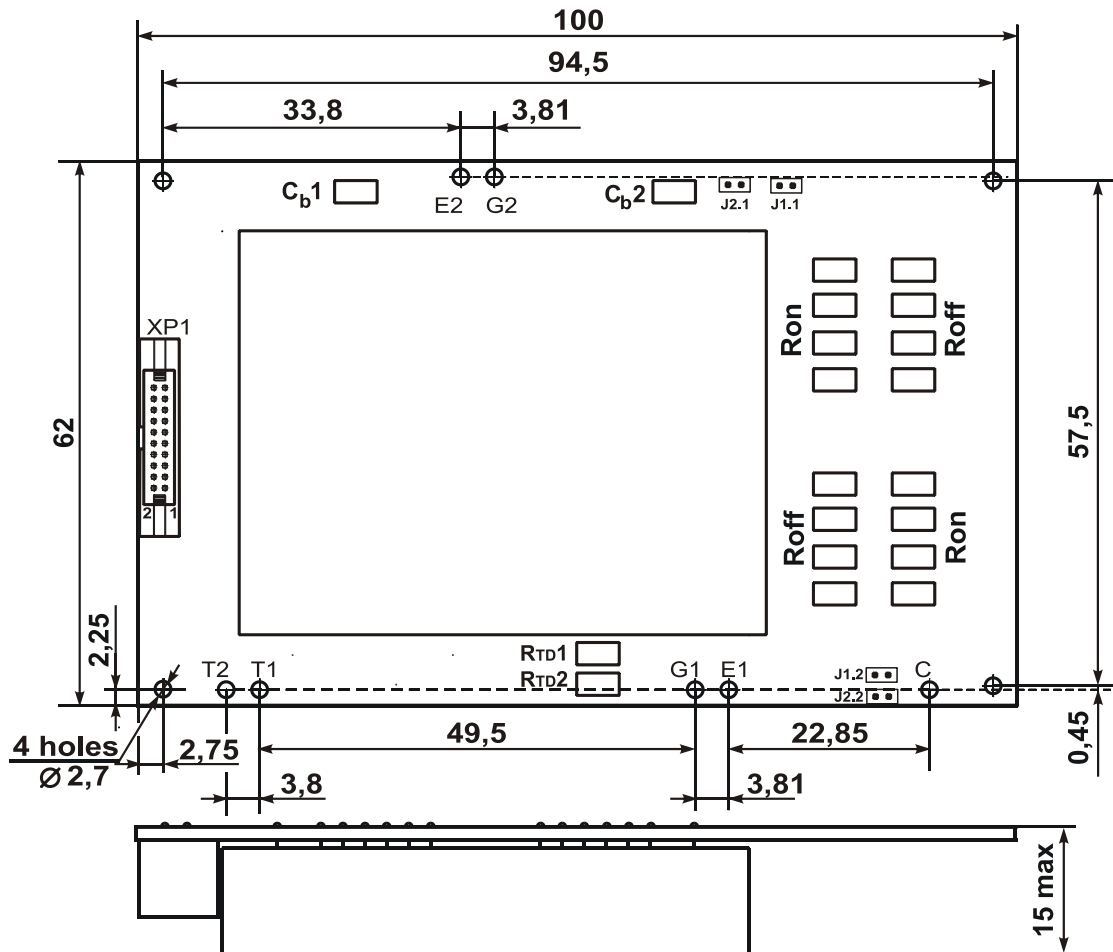


Figure 1 – Overall drawing

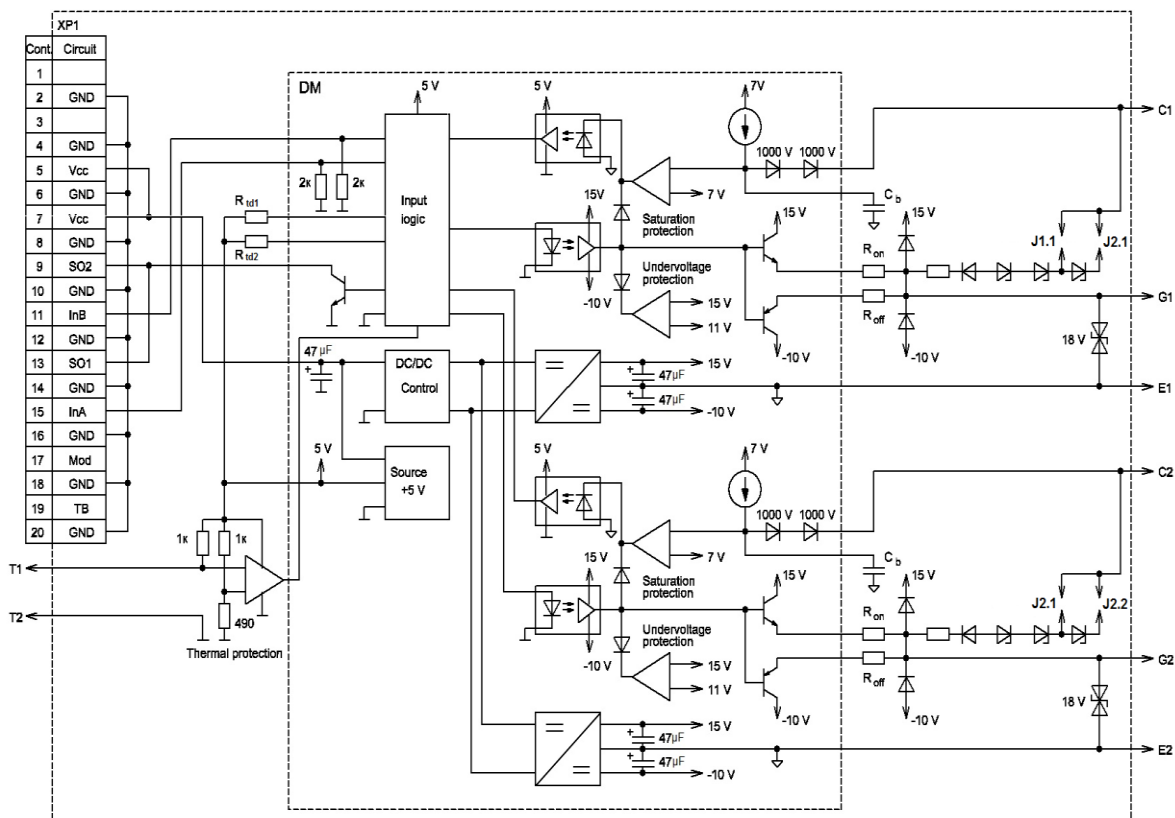


Figure 2– Functional driver circuit and turn-on circuit

XP1 – plug IDCC-20MR; mate - socket IDC-20

3.3 Output function is given in Table 1.

Table 1 – Output function of XP1

Output #	Function	Symbol
1	-	Not involved
2	GND	Ground of power circuits and control circuits
3	-	Not involved
4	GND	Ground of power circuits and control circuits
5	Vcc	Supply +15 V
6	GND	Ground of power circuits and control circuits
7	Vcc	Supply +15 V
8	GND	Ground of power circuits and control circuits
9	SO2	Error output (open collector)
10	GND	Ground of power circuits and control circuits
11	INb	Control input of channel 2
12	GND	Ground of power circuits and control circuits
13	SO1	Error output (open collector)
14	GND	Ground of power circuits and control circuits
15	INa	Control input of channel 1
16	GND	Ground of power circuits and control circuits
17	-	Not involved
18	GND	Ground of power circuits and control circuits
19	-	Not involved
20	GND	Ground of power circuits and control circuits

4 BASIC AND MAXIMUM PERMISSIBLE PARAMETERS

Table 2 – Basic and maximum permissible parameters (at T = 25 °C)

Parameter	Symbol	Unit	Value			Note
			min	type	max	
DC/DC block characteristics						
Supply voltage	U_S	V	13.5	15	16.5	
Off-load current consumption	I_S	mA		90	120	$F_{cont} = 0$ Hz
Maximum current consumption	$I_{S_{max}}$	mA			550	Under load Ref. to Figures 5 and 6
Power of built-in power supply of output part	P_{DC-DC}	W	3			For each channel
Voltage monitor characteristics						
Protection turn-on threshold	U_{UVLO-}	V		11		DC-DC output
Protection turn-off threshold	U_{UVLO+}	V		12		
Temperature protection characteristics						
Thermistor resistance that corresponds to protection operate	R_t	Ω		490		
Module temperature that corresponds to protection operate	T_B	$^{\circ}C$		95		
Temperature protection hysteresis	η	%	10	13		
Control input characteristics						
High level input voltage	U_{IH}	V	3	5	5.6	
Low level input voltage	U_{IL}	V	-0.6	0	0.8	
Input resistance	R_{IN}	k Ω		2		

Time characteristics						
Turn-on/off delay time input-output	t_d (in-out)	μs			0.5	ref. to Figure 11
«Dead time» between signal changes of the first and second output channel	t_{TD}	μs	2			Set by consumer; ref. to Figure 10
Maximum operating frequency	f_{max}	kHz			100	No-load; ref. to Figure 5 and 6
Non-saturation protection operation delay time	t_{BLOCK1}	μs	2			Set by consumer; ref. to Figure 9
Lock time of controlled transistor after “Emergency”	t_{BLOCK2}	ms		70		
Soft emergency shutdown time of controlled transistor	t_{off}	μs		1.5		
Emergency turn-on delay time	$t_{d(\text{on-err})}$	μs			2	
Output characteristics						
High level output voltage	U_{OH}	V	+12	+15	+18	In all range of permissible loads
Low level output voltage	U_{OL}	V	-8	-10	-12	
Maximum output pulse on current	$I_{O\text{max on}}$	A	+18	20		Set by consumer; ref. to Figure 8
Maximum output pulse off current	$I_{O\text{max off}}$	A		-22	-18	
Average output current	I_O	mA			130	To each channel
Rise and fall time of output signal	$t_r(f)$	ns			150	ref. to Figure 11
Maximum current of “Emergency” output	$I_{\text{ERR max}}$	mA			20	
Maximum voltage of “Emergency” output	$U_{\text{ERR max}}$	V			20	
Residual voltage of “Emergency” output	$U_{O\text{ERR}}$	V		0.3	0.7	at $I_{\text{ERR}} = 20\text{ mA}$
Saturation voltage that corresponds to non-saturation protection operation	$U_{\text{MC}}^{\text{Th}}$	V			5.8	Set by consumer, ref. to Table 3
Insulation characteristics						
Maximum permissible reverse collector voltage	U_C	V			2000	
Insulation voltage between input and output	$U_{\text{ISO(IN-OUT)}}$	V			4000	DC, 1 minute
Insulation voltage between output of the first and second channel	$U_{\text{ISO(OUT1-OUT2)}}$	V			2000	DC, 1 minute
Critical rate of output voltage change	$(dU/dt)_{\text{cr}}$	kV/ μs			20	
Protection characteristics against overvoltage						
Protection operation voltage against collector-emitter overvoltage of controlled transistor (ref. to Figure 12)	U_{AC}	V		1100		J1.1(2) installed
				1600		J2.1(2) installed
Characteristics of controlled transistor						
Maximum permissible voltage of controlled transistor	$U_{CE} (U_{DS})$	V			1700	
Service and storage characteristics						
Operating temperature range	T_A	$^{\circ}\text{C}$	-45		+85	
Storing temperature	T_S	$^{\circ}\text{C}$	-60		+100	

5 DRIVER OPERATION

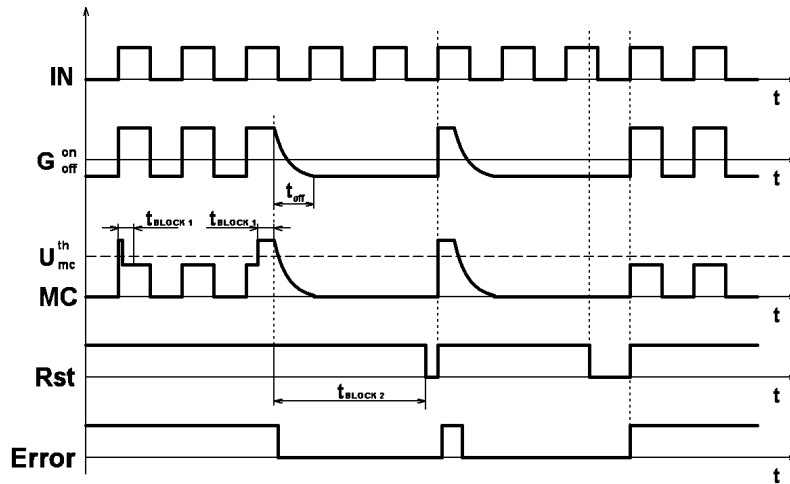
Delivery of «log.1» on controlling input «INa» или «INb» will lead to opening of controlled transistor. Open state voltage fall increasing by more than U_{ms}^{Th} per time, exceeding t_{BLOCK1} , will lead to protection operation of open state voltage fall increasing (non-saturation protection). When “emergency” the transistor connected in accordance with the circuit with open collector («SO1» и «SO2») will open. In 70 ms emergency reset will be performed by internal circuit of emergency reset and on rising edge of control signal «IN» the controlled transistor will be opened. In the event when the emergency cause was not disposed then the protection cycle will be recurred.

Driver supply voltage decrease to protection operation threshold level against driver supply undervoltage « U_{uvlo-} » will lead to closing of controlled transistor regardless of input control signals. Control signals will recover on protection operation threshold against driver supply undervoltage « U_{uvlo+} ». There is not an error signal on «SO» output when protection operation against supply undervoltage.

The simultaneous delivery of “log. 1” to outputs «INa» and «INb» will lead to control blocking and the controlled transistors will be closed, thereby error signaling on «SO» output does not arise.

When temperature protection operates the driver operation will be blocked until module temperature is lower than the operation temperature by 100% thereby there is no any emergency signal.

Diagrams explaining driver operation is shown at Figures 3 and 4.



R_{st} – Periodical internal signal of “emergency” reset

Figure 3 – Functional diagram of driver operation at «emergency»

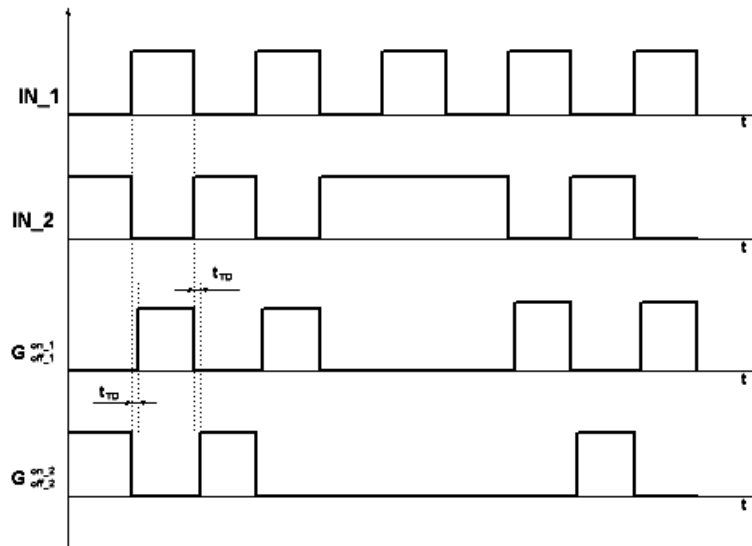


Figure 4 – Functional diagram of driver operation

6 DRIVER CONNECTION RECOMENDATIONS

INa, INb – controlling input. Driver control is described in section «Driver operation». When delivering of controlling voltage you must note that the protective reverse diodes are installed on control inputs. As a result if control voltage exceeds supply voltage by more than 0.6 V then current consumption on inputs will be increased and with considerable increase of supply voltage the driver can fail.

If the driver should be controlled by the level «log.1» of amplitude 15 V then it is recommended to connect resistors 3.9...4.3 k Ω serially.

SO1, SO2 – outputs signaling about emergency. The outputs are a transistor with open collector of protection circuit. Therewith the transistor will open only when emergency caused by current overload of power transistor; if driver supply voltage is decreased to level «U_{uvlo-}» the transistors will be closed regardless of input control signals (signals will be recovered when reaching of supply level that corresponds to «U_{uvlo+}») but “Error” signaling in this case will not occur. There will not be also alarm when simultaneous delivering of signals corresponding to «log.1» to controlled inputs, though output transistor will be closed.

It is not recommended to apply to these outputs the voltage and current which are higher than the maximum permissible ones including in short-time.

Vcc – driver supply input. You should note that when driver supply voltage decreases, the output voltage of DC/DC – converter will be also decreased. Therewith if the supply is lower than the permissible level the input circuit can operate regularly, but the voltage on gates of controlled transistor can drop to level «U_{uvlo-}» and transistor control will be false.

Maximum no-load current consumption on supply input is 120 mA. When transistors connection the current consumption will increase by value of gate recharge current and can reach 550 mA (equal load to both channel). At higher current consumption DC/DC – converter can fail, or, on short-time current consumption increasing by 550 mA, output voltage of DC/DC – converter will decrease to unallowable level and under-voltage protection will operate, that will lead to faulty transistor drive. If the channel load is assigned irregularly then current consumption by one channel should not exceed 250 mA. Current consumption depends on control signal frequency, gate capacitance and gate resistors values as well as on input gate capacitance (ref. to Figure 6). Thereby, when using the driver you must make a correction for current consumption subject to transistors, which the driver will work on. Safe operation area of the driver versus gate capacitance and frequency is shown at Figure 5.

GND – ground of control circuits and supply circuits; thereby control circuit does not have a galvanic isolation with DC/DC-converter input.

Resistors Rtd1, Rtd2 – timing resistor of switching delay setting of the first and second channel. Actually resistors regulate turn-on delay time thereby when resistor installing with diverse nominal the switching delay of controlling pulses leading edge of the first and second channel will be different.

If there is no any need for increasing of switching delay time, then you shall install the jumpers instead of resistors. The dependence of delay time on the resistor nominal is shown at Figure 10. Initially the resistors with 1 Ω nominal are installed that corresponds to minimum “dead time” (2 μ s).

Capacitor C_{b1}, C_{b2} – timing turn-off delay capacitor of corresponding controlled transistor at current overload. Protection operation delay is necessary to avoid the maloperation of short-time inductive kicks and of turn-on transient process. Thereby the delay duration will be equal to “rerun pulse” duration in case of emergency. To increase protection operation delay you are recommended to install the capacitors with nominal shown at Figure 9. Initially the capacitors with 100 pF capacitance are installed; it corresponds to delay time 5 μ s (typ.).

G1, G2 – outputs for gates connection of controlled transistors.

Gate resistors (Ron1, Ron2, Roff1 and Roff2) are necessary for maximum pulse current decrease. Resistor installing with every nominal is allowed, including 0 Ω . Resistor installing with different nominal is also allowed; for instance, in order to increase turn-on time of controlled transistor purposely to decrease voltage amplitude of inductive kicks. Output pulse current versus gate resistor nominal is shown at Figure 8.

Initially the resistors with 0.2 Ω are installed that corresponds to maximum pulse current.

C, E1 – collector (drain) connection output of controlled transistor. The outputs are intended for voltage fall controlling (saturation protection) on transistor. Thereby maximum value of protection operation threshold is 5.8 V.

If there is no any need for current overload protection then output «C» should be short-circuited to emitter output of corresponding channel.

E1, E2 – emitter connection outputs of controlled transistor.

T1, T2 – thermistor connection input. Thermistor resistance increases up to 490 Ω (typ.) corresponds to temperature protection operate. If temperature protection is not required then these outputs should not be involved.

Jumpers

J1, J2 – jumpers for choice of control voltage. When the jumpers have installed then the level “Log. 1” corresponds to +5V; when the jumpers have not installed then the level “Log. 1” corresponds to +15V.

J1, J2 – jumpers that connect collector-emitter overvoltage protection of controlled transistor of channel 1 and 2 accordingly. At that, operate voltage 1100 V corresponds to position J1.1(2), voltage 1600 V corresponds to position J2.1(2).

7 DRIVER ADJUSTMENT RECOMMENDATIONS

In order to create the driver that is an analogue to the plug-n-play driver 2SP0115 for the special module it is recommended to adjust DR2180P-B4 in compliance with driver 2SP0115. You should adhere to the following technique when driver setting up:

1. Disconnect the driver 2SP0115 from the module, connect DC voltage sources between collector and emitter outputs, control gate signal.

2. Signal and measure “dead time” on switching (level 0 V);

3. Measure protection operation voltage by smooth rising of voltage at the sources that imitate transistor saturation voltage.

4. Relative to protection operation threshold you should increase the voltage twice and measure de-saturation protection operation delay.

5. Reset “Emergency” mode, set up the frequency of control signal 0.1...1 kHz, connect RC-chain (resistor to gate) between gate and emitter with nominal 0.1 Ω / 1 μ F (non-polar condenser). Connect the driver and measuring resistor voltage drop (measurement of pulse driver current).

6. Set up DR2180P-B4 in compliance with the characteristics of 2SP0115 driver, notably:

- set up “dead time” by Rdt resistors in compliance with the Figure 10;

- set up protection operate delay time by capacitor C_b in compliance with Figure 9;

- set up output pulse current by resistor Rg on(off) in compliance with Figure 8.

7. Measure the received parameter of DR2180P-B4 similarly to 2SP0115 driver test, be assured in their equivalent.

8. Connect the driver to the power module and be sure that the converter operates by analogy to the variant of 2SP0115 driver.

8 GRAPHS EXPLAINING DRIVER OPERATION

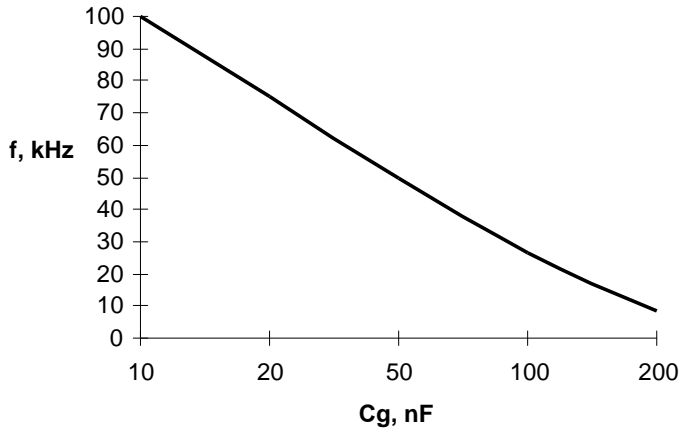


Figure 5 – Safe operation area versus frequency and gate capacitance (with gate resistor 1 Ω)

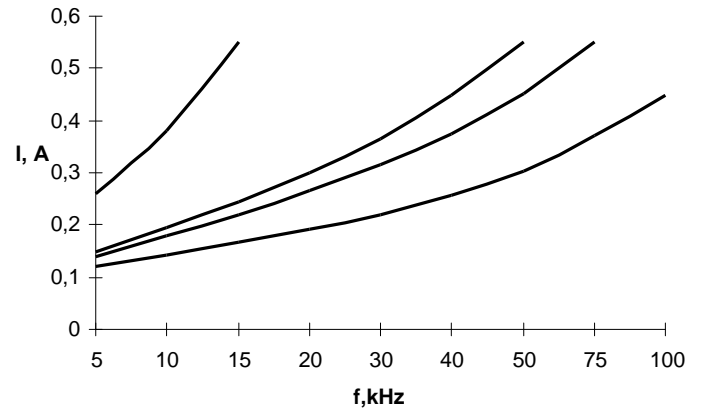


Figure 6 – Current consumption versus signal frequency under load (with gate resistor 1 Ω)
For gate capacitance 10 nF, 25 nF, 50 nF, 100 nF

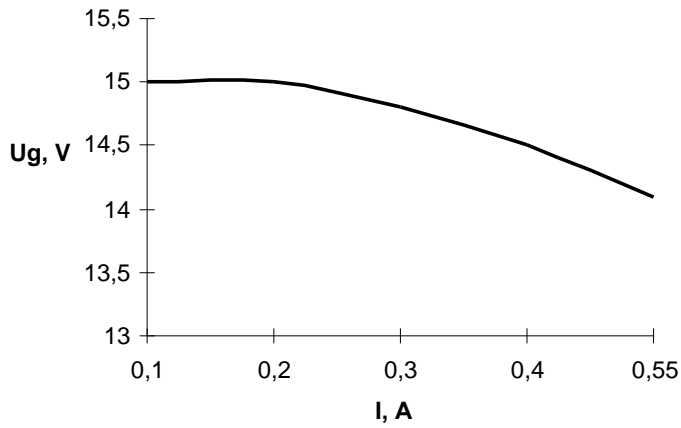


Figure 7 – Transistor gate voltage versus current consumption

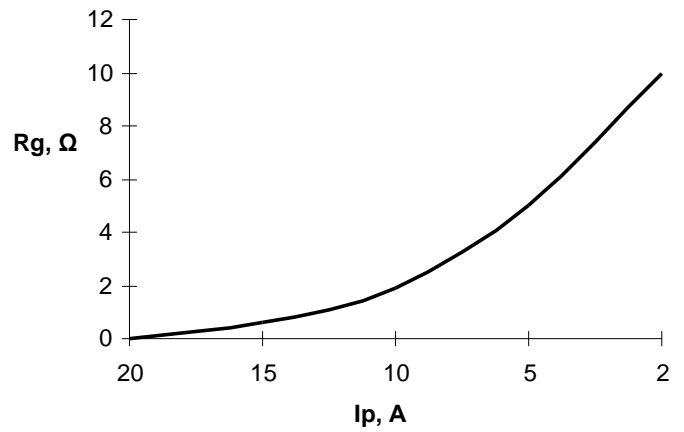


Figure 8 – Output pulse current versus gate resistor nominal

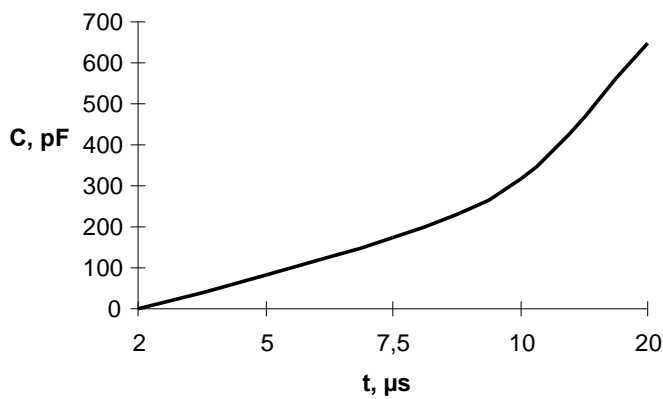


Figure 9 – Turn-on delay time of saturation voltage versus trimming capacitance C_b nominal

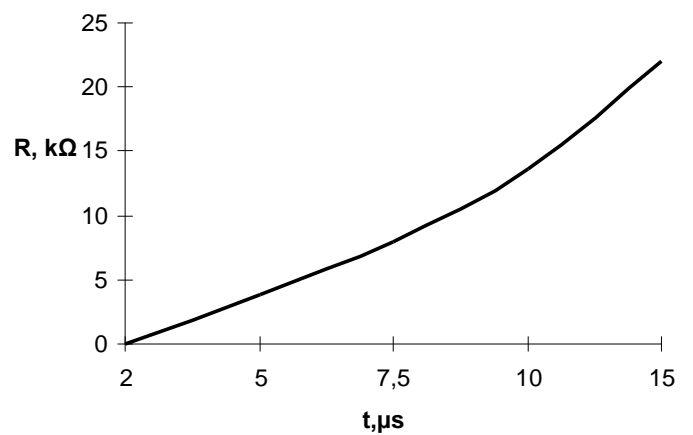


Figure 10 – “Dead” time duration versus trimming resistor R_{TD} nominal

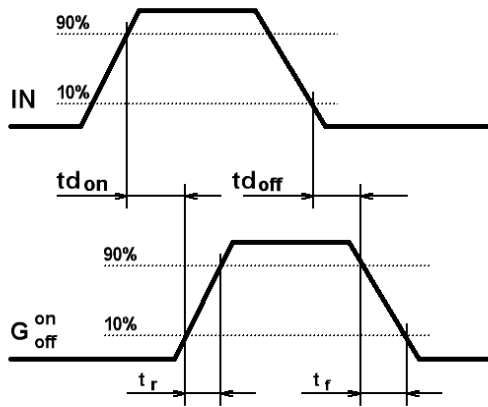


Figure 11 – Diagram explaining timing driver characteristics where IN – input control signal; G – gate signal of controlled transistor

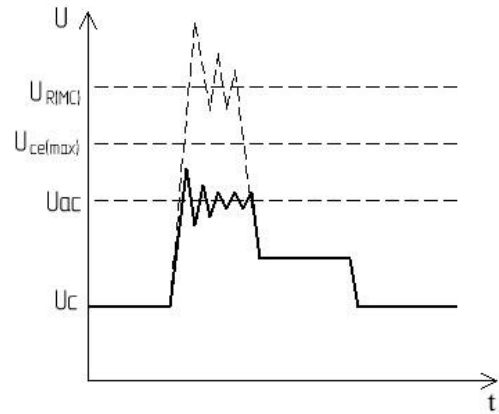


Figure 12 – Driver operation when collector-emitter overvoltage protection operate of controlled transistor where U_{ac} – protection operate voltage against overvoltage; $U_{ce(max)}$ – max. collector-emitter voltage of power transistor, $U_{r(mc)}$ – max. reverse voltage on collector output

9 INFORMATION ABOUT PRECIOUS METALS

Precious metals are not contained.

10 SERVICE RECOMMENDATIONS

10.1 Resistance requirements at mechanical impacts

Mechanical impacts for drivers in accordance with qualifying standards of controlled power transistors are shown in Table 4.

Table 4 – Drivers resistance requirements to mechanical impact factors

External exposure factors	External exposure factor value
Sinusoidal vibration:	
- frequency range, Hz;	0.5 - 100
- acceleration amplitude, m/s^2 (g)	150 (15)
Mechanical shock of single action:	
- peak shock acceleration, m/s^2 (g);	40 (4)
- pulse duration of shock acceleration, ms	50

10.2 Resistance requirements at climatic impacts

Table 5 - Resistance requirements to climatic impact factors

Climatic factor	Climatic factor value
Lower ambient temperature: - operating, °C; - maximum, °C	minus 45 minus 60
Higher ambient temperature: - operating, °C; - maximum, °C	+85 +100
Relative humidity with temperature 35 °C without moisture condensation, %, max	98
Ambient temperature change, °C	from minus 60 to +100
Lower atmospheric pressure, Pa (mm Hg)	86000 (650)
Higher atmospheric pressure, Pa (mm Hg)	106000 (800)

11 RELIABILITY SPECIFICATIONS

The manufacturer guarantees the quality of the module all the requirements of the user's manual if the consumer observes terms and conditions of storage, mounting and operation, as well as guidance on the application specified in the user's manual.

Operating warranty is 2 years from the acceptance date, in the case of requalification – from the date of the requalification.

Reliability probability of the driver for 25000 hours must be at least 0.95.

Gamma-percent life must be not less than 50000 hours by $\gamma = 90\%$.

Gamma-percent service life of the modules, subject to cumulative operating time is not more than gamma-percent life, not less than 10 years, at $\gamma = 90\%$.

Gamma-percent storageability time of the modules, at $\gamma = 90\%$ and storing – 10 years.

5 Naugorskoe shosse, Orel, 302020, Russia Tel. +7(4862) 44-03-44, Fax +7(4862) 47-02-12

E-mail: mail@electrum-av.com