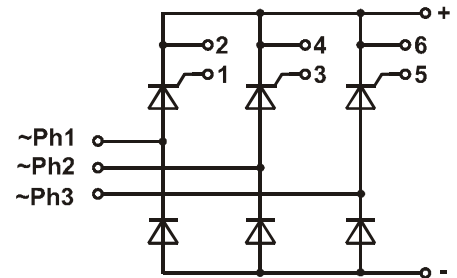
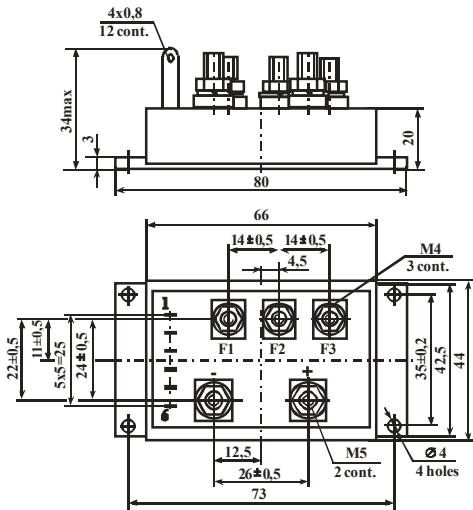


## 3-PHASE THYRISTOR BRIDGE MODULE M23M-63-12 DATASHEET IN BRIEF

Module of three-phase thyristor - diode bridge with controlling with three thyristors in cathode group, is intended for rectifying (converting alternating current into pulsating constant voltage)

### OVERALL DRAWING AND MODULE CIRCUIT



### BASIC PARAMETERS

T = 25 °C

Parameter		M23M-63-12
Pulse voltage in thyristor/diode on-state, $U_{TM}/U_R$ , V	max	1.65
	$I_O$ , A amplit. value	$\frac{\pi}{3} \cdot I_O'$ 10 ms, 50 Hz, sinus
Off-state current thyristor/diode $I_D/I_R$ , mA	max	2.0
	$U_O$ , V	$\pm 1200$
Unlocking thyristor control direct voltage, $U_{GT}$ , V	max	3.0
Unlocking thyristor control direct current, $I_{GT}$ , mA	max	200
Electric isolation strength at DC between the radiator and power outputs, $U_{ISOL}$ , V	min	4000
	t, minute	1
Gate non-trigger direct voltage of thyristor control, $U_{GD}$ , V $T_j = 125^\circ C$	min	0.25
	max	1.00
Thermal resistance junction – radiator, $R_{th(j-c)}$ , °C/W	max	1.00

### MAXIMUM ALLOWABLE OPERATING MODES

Parameter		M23M-63-12
Repeating / non-repeating thyristor impulse voltage in blocking state, $U_{RRM}/U_{DRM}$ , V	max	$\pm 1200$
Average Rectified Current, $I_O$ , A $T_{case}=85^\circ C$	max	63
	max	840
Non-repeating direct surge current, $I_{TSM}$ , A	max	300
	t, ms	10
Critical rising rate of reverse voltage, $(du_R/dt)_{cr}$ , V/ $\mu s$	max	1000
Critical rising rate of forward current, $(di_T/dt)_{cr}$ , A/ $\mu s$	max	150
Junction temperature $T_{vj}$ *, °C	min	- 40
	max	+125

Precious metals are not contained.

5 Naugorskoe shosse, Orel, 302020, Russia Tel. +7(4862) 44-03-44, Fax +7(4862) 47-02-12

E-mail: [mail@electrum-av.com](mailto:mail@electrum-av.com)